

Please read these instructions carefully before beginning installation.

We recommend that apron sinks be installed by professional countertop installers and we are not responsible for damages to the countertop or sink during installation.

Always observe all local plumbing and building codes!

To avoid personal injury or damage to the sink, it is recommended for multiple people to lift and position the sink.

! Use the physical sink for measurements for framing and countertop cutout. Instructions may not account for slight natural variations.

Check plumbing connections before you begin.

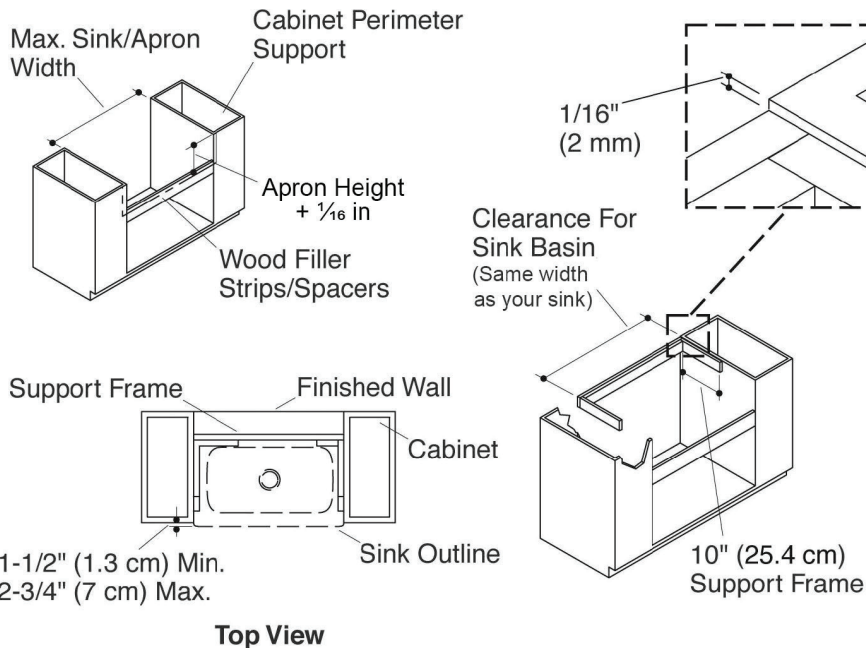
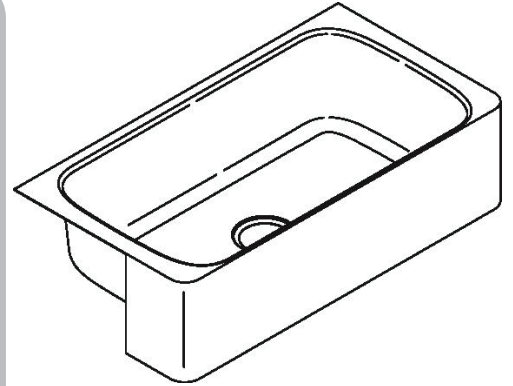
The sink cabinet must be fitted with additional framing to support the weight of the sink.

Tools

Safety glasses, tape measure, level, pencil, drill, drill bits, saw, construction adhesive, silicone sealant

Supplies

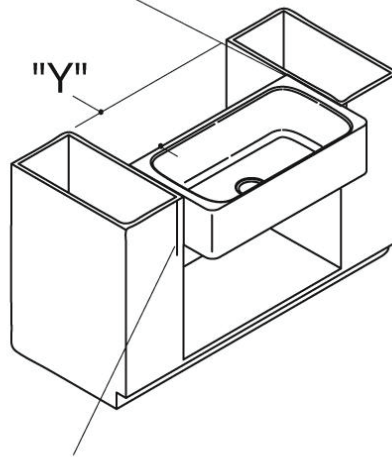
1x4 planks, construction screws, shims



Sink Support Frame

1. Determine the distance the apron will extend beyond the face of the cabinet. The apron should extend no less than 1½" (1.3 cm) and no more than 2¾" (7 cm).
2. Construct a wood frame to fit inside the cabinet opening. The cabinet opening should be the width of your sink (varies by your sink model.) Be sure to double-check your sink as this opening must be exactly the same measurement. The vertical cut should equal the apron height plus ¼ inch. For example, if your sink has a 9" apron, the vertical cut is 9¼".
3. The side supports should be 10" (25.4 cm) long unless the back support is thicker than 1" (2.5 cm). If the back support is thicker than 1" (2.5 cm), determine the length of the side supports by measuring from the inside edge of the back support to the inside edge of the apron.
4. The back edge of the support frame will support the rear edge of the apron. Measure from the front of the sink to the rear of the basin to determine the correct position. Do not measure from the front of the cabinet. Test the support frame for snug fit on the sink before permanently fastening to the cabinet.

Sink Rim Flush
With Top of
Cabinet



Wood Filler Strip (Optional)

Install the Sink

NOTE: Use shims to level the sink if needed.

- 5.** Verify that the sink will fit in the cabinet opening. If necessary, adjust the opening by sanding the opening or adding wood filler strips.
- 6.** Apply a 1" (2.5 cm) spot of sealant at each corner of the frame where it will contact the sink. NOTE: If using shims additional sealant will be needed.
- 7.** Carefully position the sink within the frame, making sure to center the sink in the cabinet.
- 8.** Verify that the sink is level. The top of the sink should be flush with the top of the cabinet to allow proper countertop installation. Adjust or shim between the sink and support if needed.
- 9.** Carefully measure the countertop to determine the exact location of the cutout.
- 10.** Carefully mark the cutout location on the countertop.
- 11.** Measure the distance "Y" and verify that there is adequate clearance between the faucet handles and the backsplash or finished wall to ensure proper faucet operation.
- 12.** Test countertop and sink countertop for fit.
- 13.** Clean the top of the sink rim and the bottom of the countertop, making sure the surfaces are free from debris.
- 14.** Apply a generous bead of sealant around the sink rim where the sink rim will contact the countertop.
- 15.** Install sink, ensuring a complete seal and fill any gaps between sink rim and countertop.

NOTE: IMMEDIATELY CLEAN ANY SPILLED SEALANT AND DO NOT LEAVE TOOLS IN SINK.

Drain and Plumbing

- 16.** Unscrew and remove nuts and gaskets, cap, and basket from drain assembly.
- 17.** Apply a generous amount of plumber's putty around rim of drain hole.
- 18.** Firmly set the body of the drain assembly into the plumber's putty. Remove any excess putty.
- 19.** Thread black rubber gasket and hand tighten plastic nut.
- 20.** Connect to drain pipe. Test for leaks.

